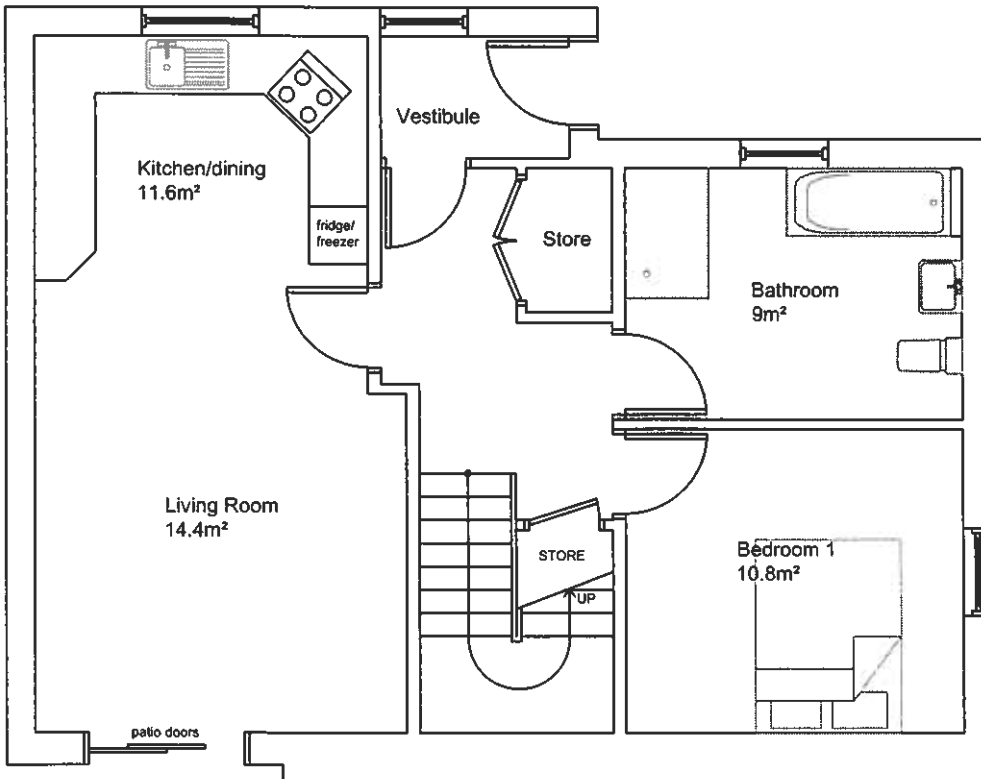


FIRST FLOOR PLAN

END HOUSE TYPE, SOUTH ROAD, LERWICK

Room Dimensions	
Kitchen/dining	3.4m x 3.42m
Living area	3.8m x 3.79m
Store	1.5m x 0.89m
Vestibule	1.95m x 1.25m
Bathroom	2.6m x 3.47m
Bedroom 1	3.14m x 3.47m
Shower room	3.84m x 1.9m
Bedroom 2	3.47m x 4.75m
Bedroom 3	4.6m x 4.49m (at widest point)



GROUND FLOOR PLAN