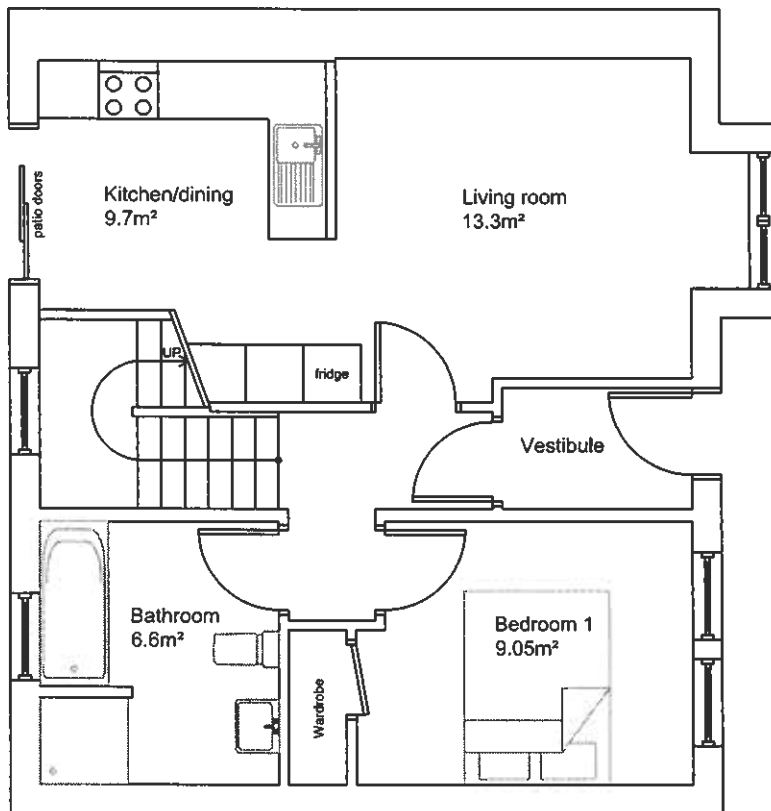


| Room Dimensions | |
|-----------------|---------------------------------|
| Kitchen/dining | 3.05m x 3.5m (at widest point) |
| Living area | 3.55m x 4.2m (at widest point) |
| Vestibule | 1.95m x 1.25m |
| Bathroom | 2.44m x 2.72m |
| Bedroom 1 | 2.72m x 3.46m (at widest point) |
| Bedroom 2 | 5.13m x 2.61m |
| Bedroom 3 | 3.75m x 3.12m |

FIRST FLOOR PLAN



GROUND FLOOR PLAN