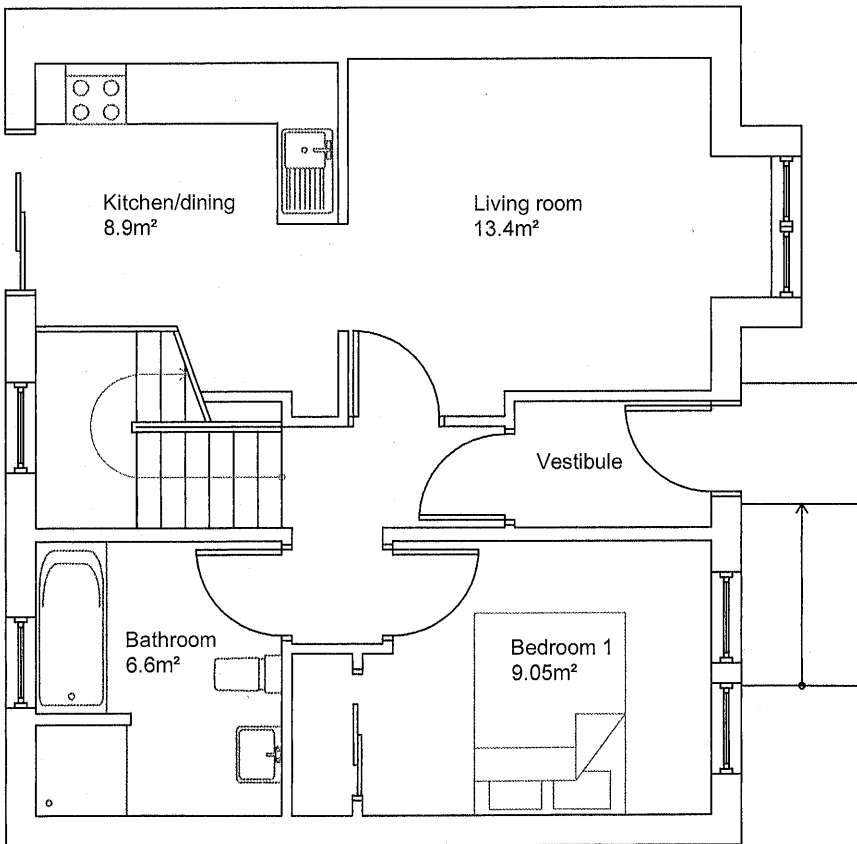


Room Dimensions	
Kitchen/dining	3m x 3.26m
Living area	3.55m x 4.2m (at widest point)
Vestibule	1.95m x 1.25m
Bathroom	2.44m x 2.72m
Bedroom 1	2.72m x 3.46m (at widest point)
Bedroom 2	5.13m x 2.61m
Bedroom 3	3.75m x 3.12m

FIRST FLOOR PLAN



GROUND FLOOR PLAN